

Benign Early Repolarization

Definition:

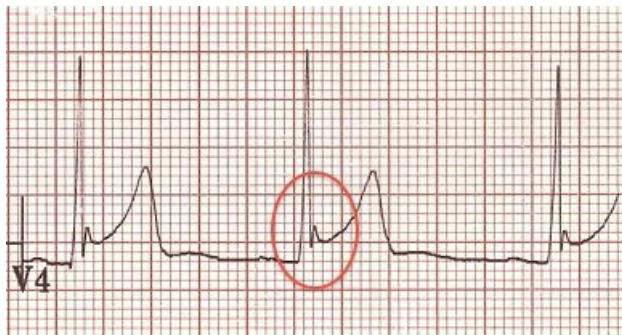
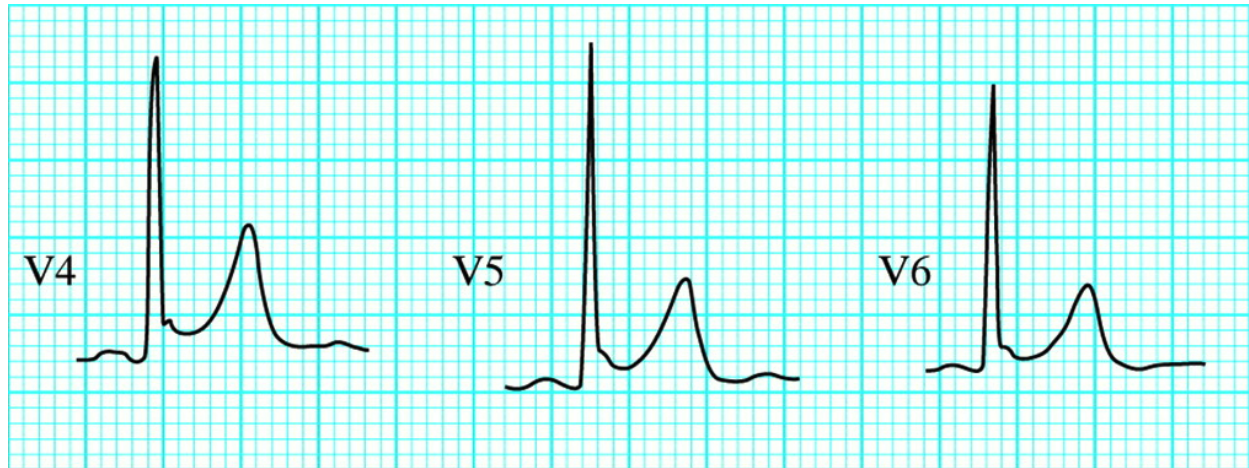
Benign ECG pattern mimicking STEMI.

History/Physical Exam:

Often young healthy males. May be found with concurrent chest pain. Common < 50 y/o, rare > 70 y/o.

Key 12-Lead Features:

- Widespread concave ST elevation with J point elevation
- May have 'fish-hooked' Osborne wave
- No reciprocal ST depression to suggest STEMI (except in aVR)
- ST changes are relatively stable over time (no progression on serial ECG tracings)

12 Leads Samples**References**

1. Edhouse J, et al. ABC of clinical electrocardiography: Acute myocardial infarction-Part II. 2002. [\[Link\]](#)
2. Haïssaguerre M, et al. Sudden cardiac arrest associated with early repolarization. 2008. [\[Link\]](#)

