

## Posterior STEMI

### Definition

History and findings suggestive of acute coronary syndrome.

### History/Physical Exam

History and findings suggestive of acute coronary syndrome.

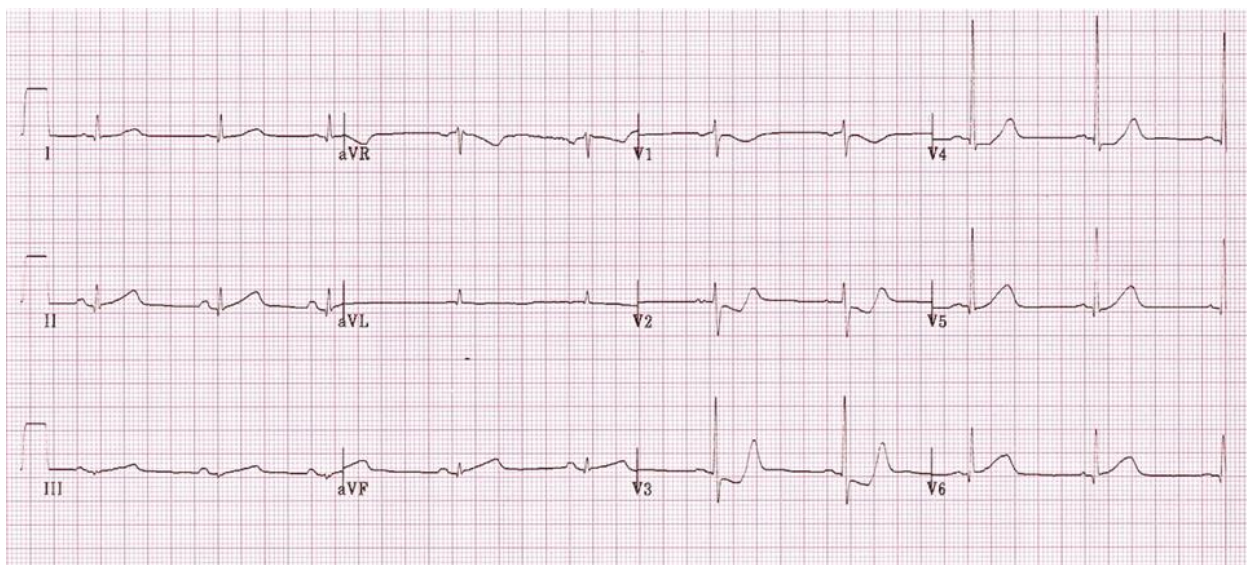
### Key 12-Lead Features

- Suspect Posterior MI with marked Precordial ST Depression V1-4 > 1mm (sensitive)
- ST Elevation in V7/8/9 > 0.5mm adds specificity

### Key Treatment Points

- Transmit as per current guidelines if believed ischemic
- Convey to PCI capable hospital
- Monitor for 12-lead changes and patient decompensation
- Treat as Acute Coronary Syndrome
- Patient advocacy at the hospital

### 12 Lead ECG Sample



### [Further Reading](#)

### References

1. Van Gorselen, EOF, et al. Posterior myocardial infarction: The dark side of the moon. 2007. [\[Link\]](#)

